

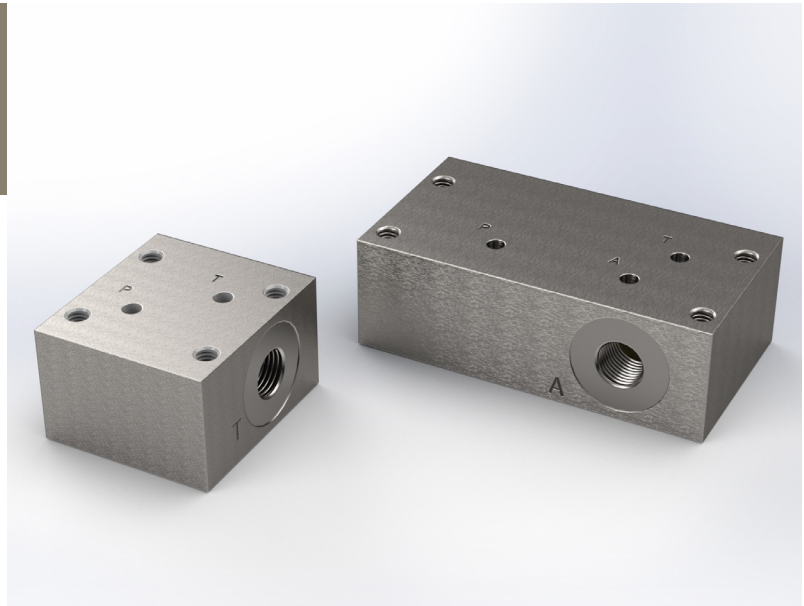
Single subplates

Type EAP-4B

NG 4 Bieri
up to 12 l/min, up to **700 bar**

Features

- Good corrosion resistance



Applications

- Single mounting of valve series WVH-4B and WVH-4B-Bi in pipe systems

Design

- Available with 1/4" and 3/8" connection threads

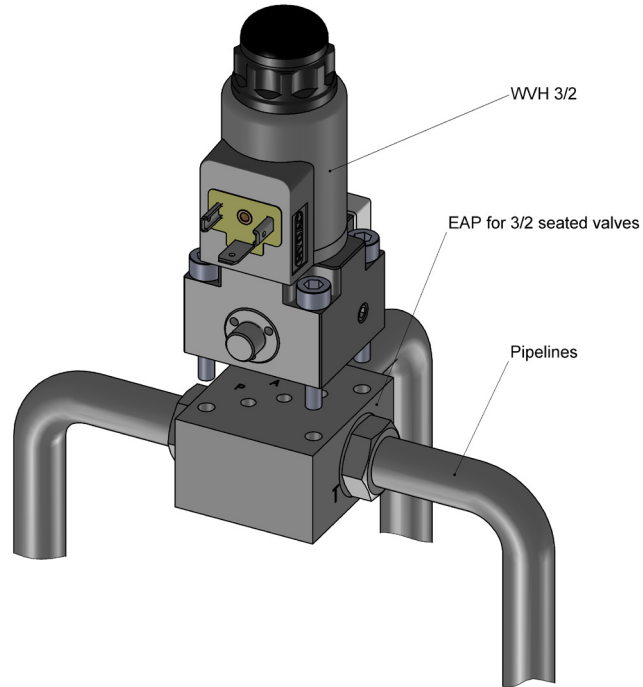
Technical data

Hydraulic fluid	mineral oil according to DIN 51524 (other fluids on request)
Fluid temperature range	-20 to 80 °C
Ambient temperature range	-30 to 50 °C
Viscosity range	5 to 400 mm ² /s
Porting	NG 4 according to Bieri standard
Max. operating pressure	700 bar
Max. flow rate	12 l/min
Filtration	according to NAS 1638 class 6 resp. ISO/DIN 4406 17/15/12
Weight	see overview "Product informations"
Material	corrosion-resistant steel

Type EAP-4B

NG 4 Bieri
up to 12 l/min, up to 700 bar





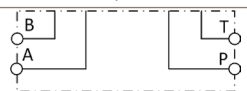

Example single mounting



Type code

Example	EAP - 4B - 2 / 2 - G3/8 - A - 00
Single Subplates	
Nominal size 4 ...	
Connection Bieri ... B	
Number of ports 2, 3 or 4	
Number of positions 2 or 3	
Threaded connection G1/4 G 1/4" port G3/8 G 3/8" port other threaded connections on request	
	Design 00 ... 99 For internal purposes
	Index Please leave blank For internal purposes
	Design revision For internal purposes

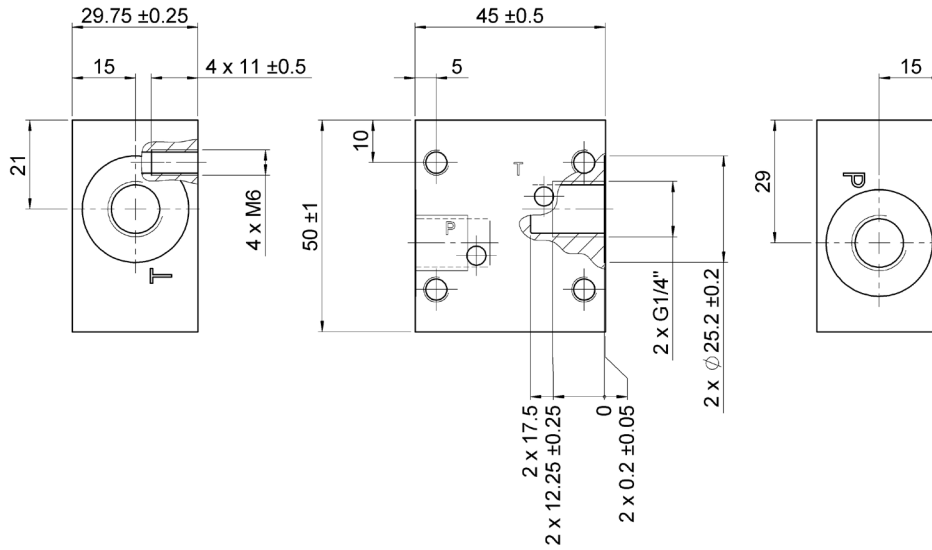
Product informations

Valve type	2/2		3/2	
Part No.	3763413	on request	3832498	on request
Threaded connection	1/4"	3/8"	1/4"	3/8"
Symbol				
Weight	0,45 kg	0,45 kg	0,45 kg	0,45 kg
Valve type	4/2	3/3		
Part No.	on request	on request		
Threaded connection	3/8"	3/8"		
Symbol				
Weight	0,45 kg	0,95 kg		

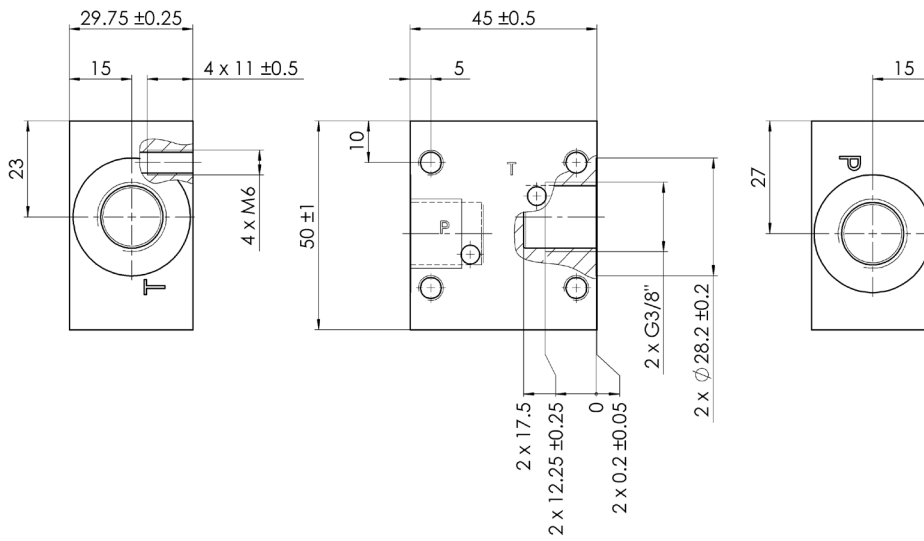
Dimensional drawings

2/2 single subplates

G1/4"

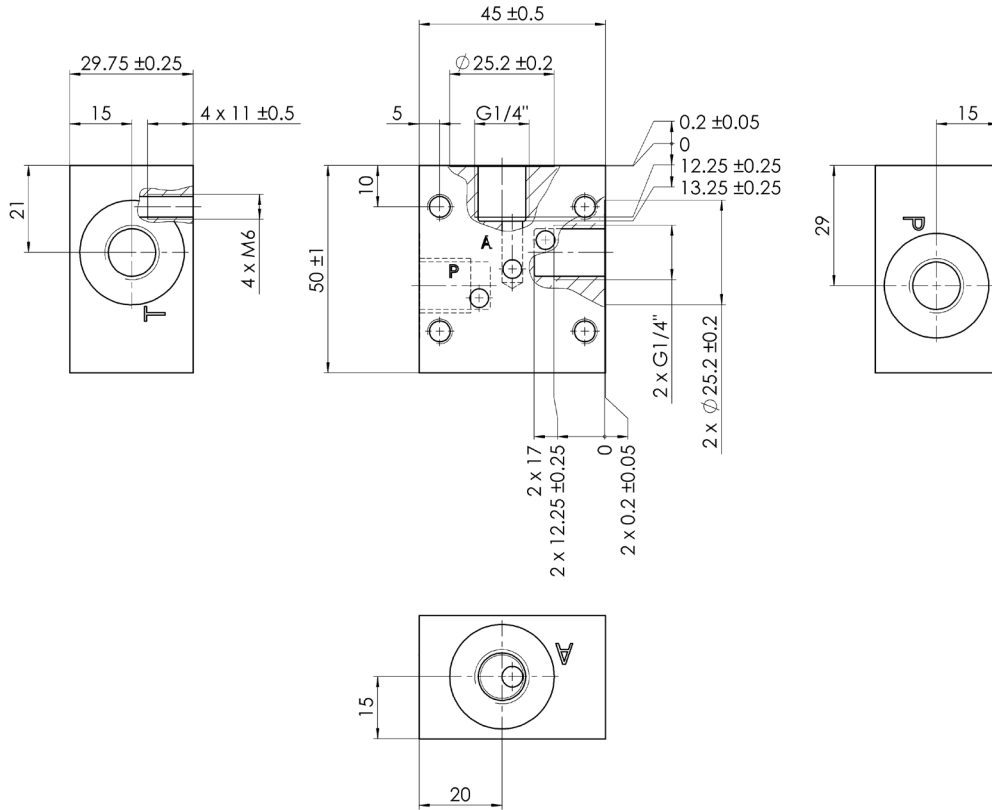


G3/8"

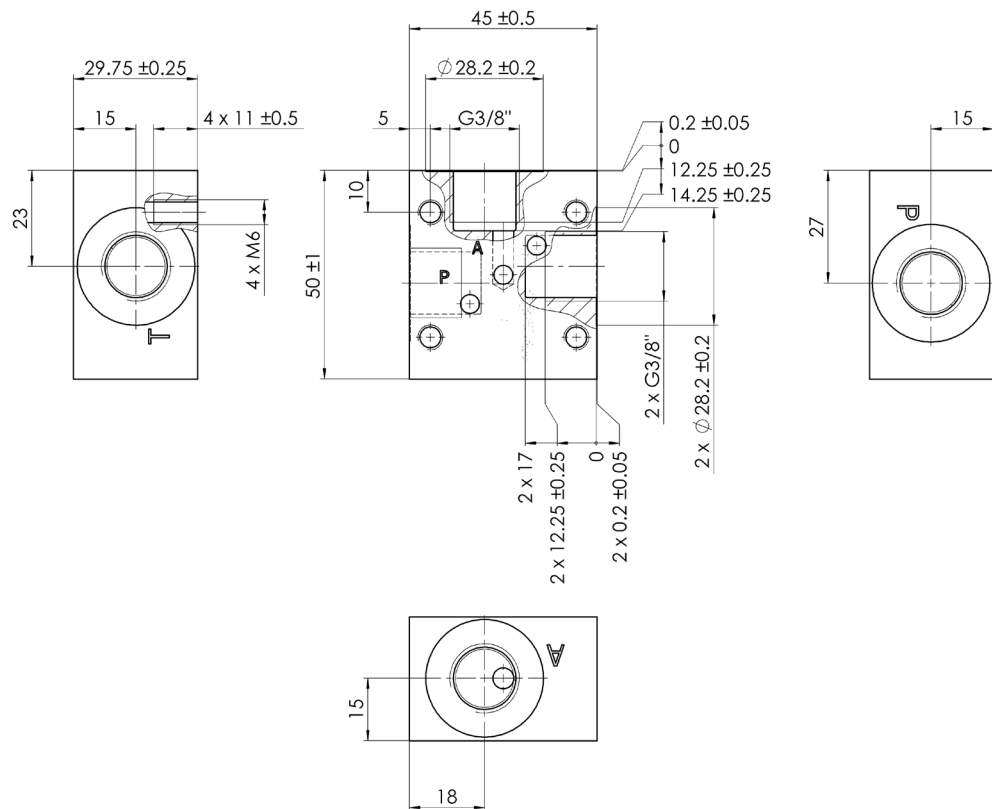


3/2 single subplates

G1/4"



G3/8"

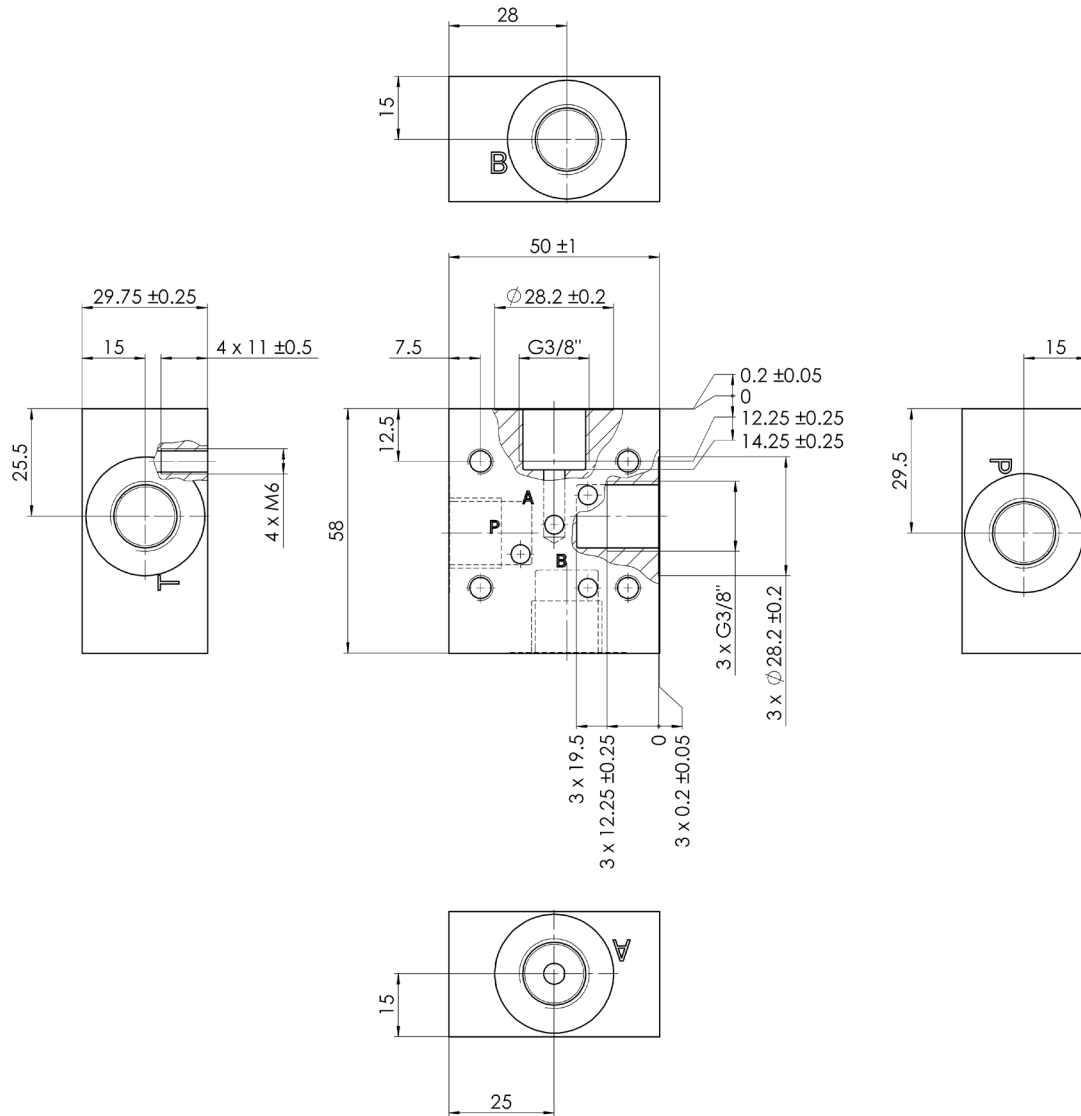


Type EAP-4B

NG 4 Bieri
up to 12 l/min, up to 700 bar

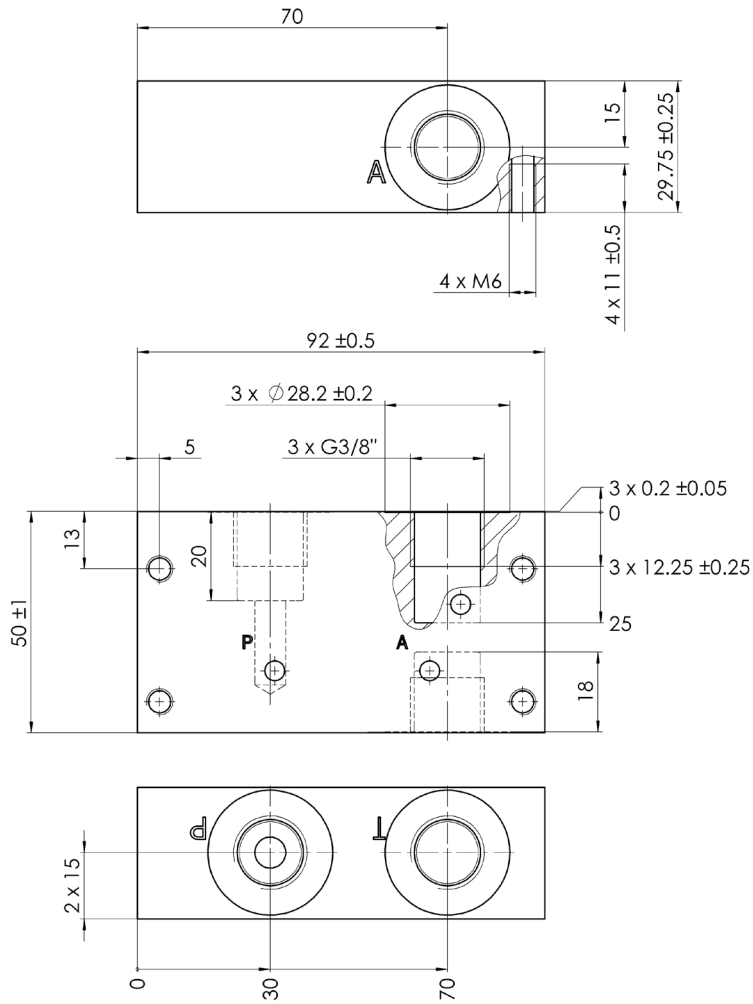
4/2 single subplates

G3/8"

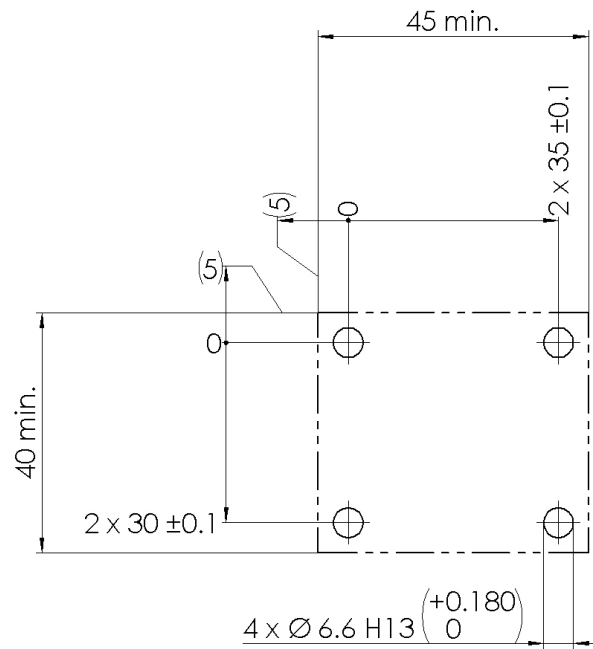


When using the single subplate, the plug in connection B of the valve must be removed and pipe port B on the valve closed.

3/3 single subplates
 G3/8"



Drilling pattern 2/2, 3/2 and 4/2 single subplates



Drilling pattern 3/3

